



产品名称

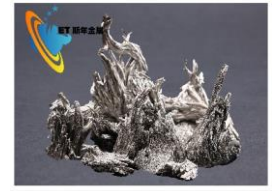
金属钕

批次号

产品形态:

CAS.No

7440-60-0



金属钕 CAS NO.7440-60-0

Element	Concentration [ppm wt]	Element	Concentration [ppm wt]
Li	< 0.01	Rh	< 0.5
Be	< 5	Pd	< 0.5
B	< 0.005	Ag	< 0.5
C	< 50	Cd	< 0.5
N	-	In	< 0.5
O	-	Sn	< 0.5
F	< 0.01	Sb	< 0.5
Na	< 10	Te	< 0.5
Mg	< 0.01	I	< 0.5
Al	< 20	Cs	< 0.5
Si	< 30	Ba	< 0.5
P	-	La	< 5
S	< 50	Ce	< 5
Cl	-	Pr	< 5
K	< 0.05	Nd	< 5
Ca	< 20	Sm	< 5
Sc	< 0.05	Eu	< 5
Ti	< 0.05	Gd	< 10
V	< 0.05	Tb	< 20
Cr	< 0.05	Dy	< 20
Mn	< 10	Ho	99.99%
Fe	~0.05Wt%	Er	< 10
Co	< 0.5	Tm	< 5
Ni	< 5	Yb	< 5
Cu	< 5	Lu	< 5
Zn	< 5	Hf	< 0.1
Ga	< 0.5	Ta	< 0.1
Ge	< 0.5	W	< 0.05
As	< 0.5	Re	< 0.05
Se	< 0.1	Os	< 0.1
Br	< 0.5	Ir	< 0.05
Rb	< 0.1	Pt	< 0.5
Sr	< 0.5	Au	< 0.1
Y	< 5	Hg	< 0.5
Zr	< 0.5	Tl	< 0.5
Nb	< 0.5	Pb	< 0.01
Mo	< 0.5	Bi	< 0.01
Ru	< 0.5	Th	< 0.01



Amy Liu